

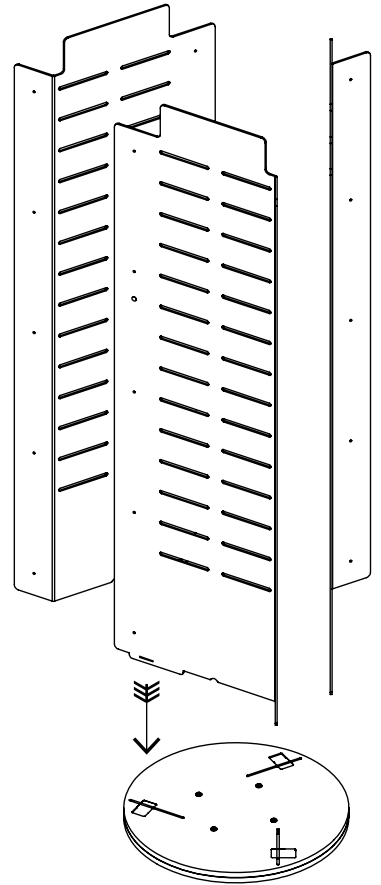
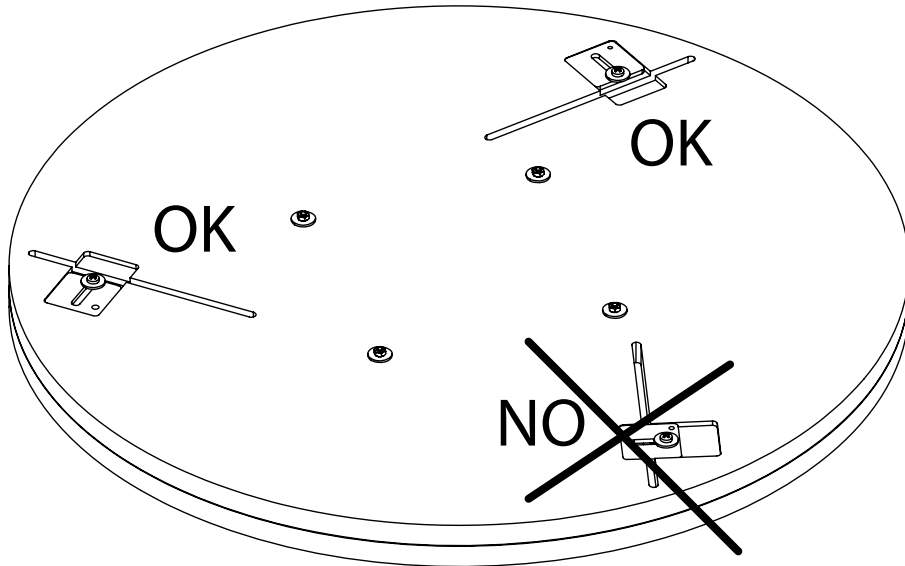
# istruzioni di montaggio

Expo Accessori

## 1 BASAMENTO

Assicurarsi che le placchette lascino le feritoie aperte.

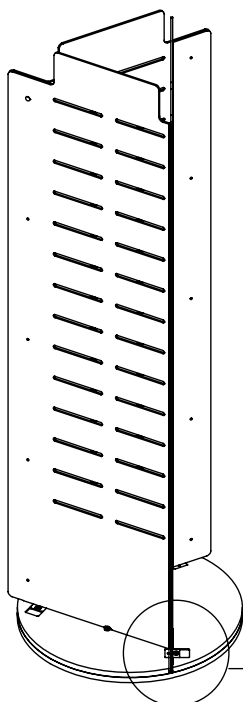
Usare il forellino con la punta del cacciavite per spostare agevolmente la placchetta.



## 2 PANNELLI

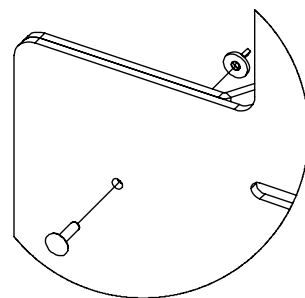
Inserire i 3 pannelli nelle feritoie del basamento.

Meglio essere in 2 persone.



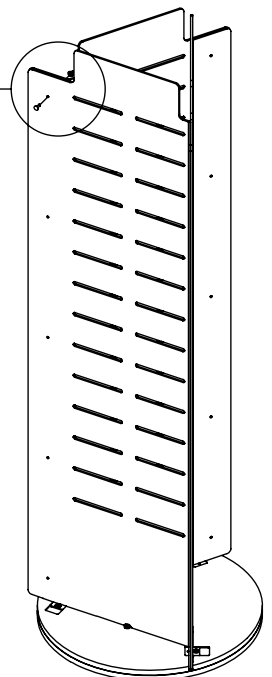
## 3 PANNELLI

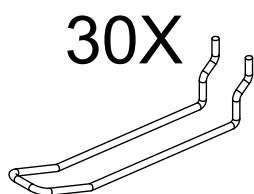
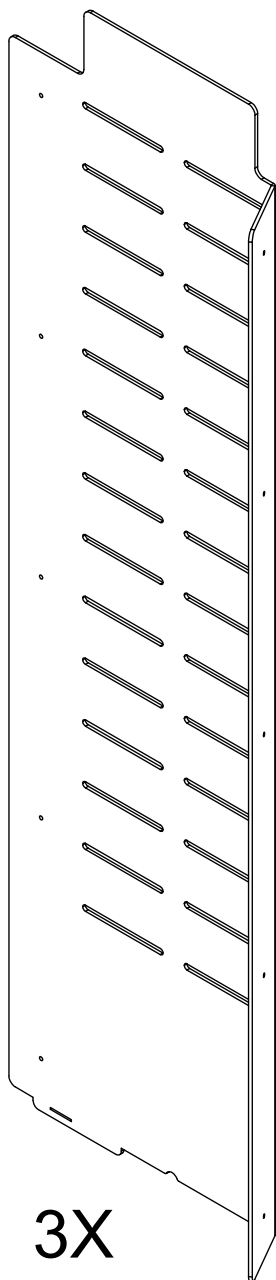
Serrare le 3 viti delle placchette.



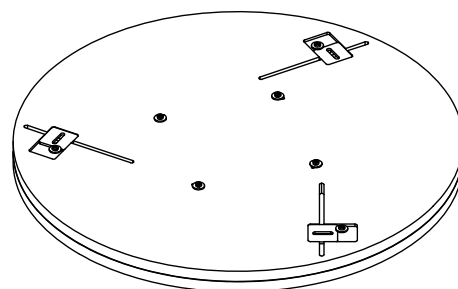
## 4 VITI PLASTICA

Serrare le 15 viti in plastica che chiudono i pannelli.

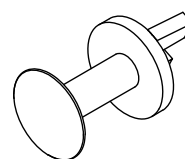




IMBALLO 01



1X



15X

IMBALLO 02